

1S2471
1S2472
1S2473

Diode, switching, leaded

These diodes are in a glass sealed envelope and are suitable for lead mounting on printed circuit boards. They have a high switching speed. (The reverse recovery time (t_{rr}) is typically 1.5 ns.)

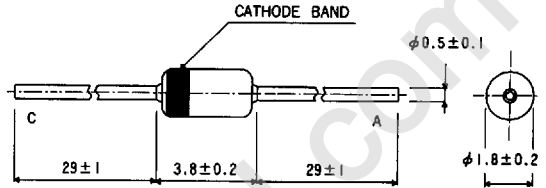
Features

- available in DO-35 package
- part marking, see following table

Applications

- high speed switching

Dimensions (Units : mm)



Cathode band color

Part no.	Color
1S2471	Black
1S2472	Green
1S2473	Yellow

Absolute maximum ratings ($T_a = 25^\circ\text{C}$)

Parameter		Symbol	Limits	Unit	Parameter		Symbol	Limits	Unit
Peak reverse voltage	1S2471	V_{RM}	90	V	Surge current (1 s)	1S2471	I_{surge}	600	mA
	1S2472		55			1S2472		500	
	1S2473		40			1S2473		400	
DC reverse voltage	1S2471	V_R	80	V	Power dissipation	1S2471	P_d	300	mW
	1S2472		50			1S2472		300	
	1S2473		35			1S2473		300	
Peak forward current	1S2471	I_{FSM}	400	mA	Junction temperature	1S2471	T_j	175	$^\circ\text{C}$
	1S2472		350			1S2472		175	
	1S2473		300			1S2473		175	
Mean rectifying current	1S2471	I_O	130	mA	Storage temperature	1S2471	T_{stg}	-65 ~ +175	$^\circ\text{C}$
	1S2472		120			1S2472			
	1S2473		110			1S2473			

Electrical characteristics (unless otherwise noted, $T_a = 25^\circ\text{C}$)

Parameter		Symbol	Min	Typical	Max	Unit	Conditions
Forward voltage	1S2471	V_F		0.92	1.2	V	$I_F = 100\text{ mA}$
	1S2472			0.92	1.2		
	1S2473			0.92	1.2		
Reverse current	1S2471	I_R		0.020	0.5	μA	$V_R = 80\text{ V}$
	1S2472			0.012	0.5		$V_R = 50\text{ V}$
	1S2473			0.010	0.5		$V_R = 35\text{ V}$
Capacitance between terminals	1S2471	C_t		1.55	2	pF	$V_R = 0.5, f = 1\text{ MHz}$
	1S2472			1.55	2		
	1S2473			1.50	3		
Reverse recovery time	1S2471	t_{rr}		1.5	4	ns	$V_R = 6\text{ V}, I_F = 10\text{ mA}$
	1S2472			1.5	4		
	1S2473			1.5	4		

Electrical characteristic curves

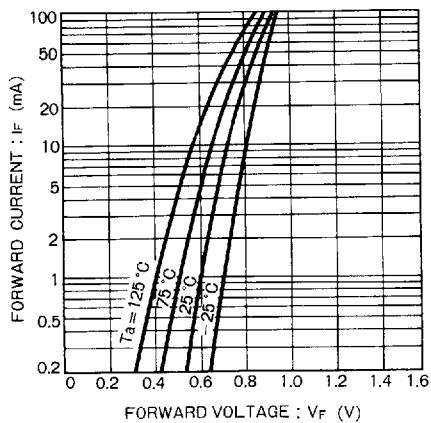


Figure 1

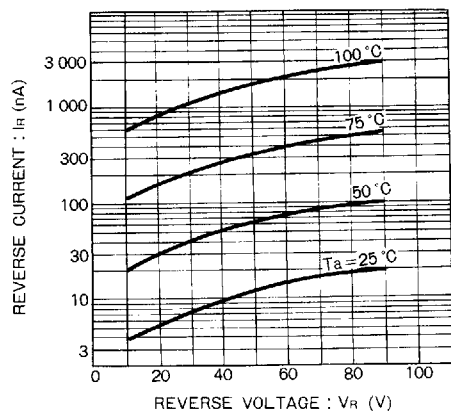


Figure 2

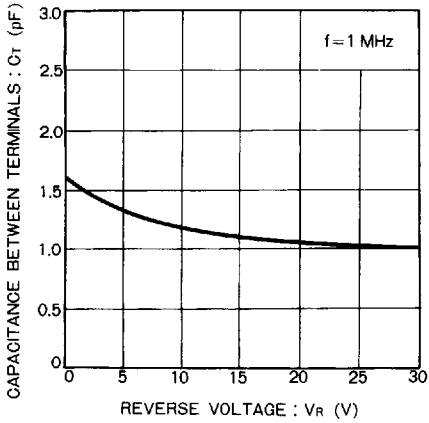


Figure 3

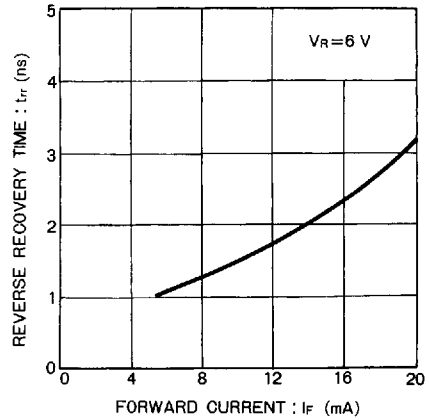


Figure 4

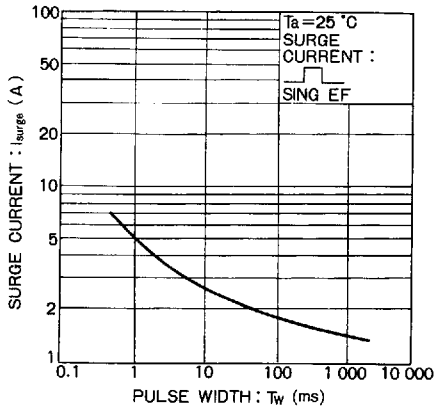
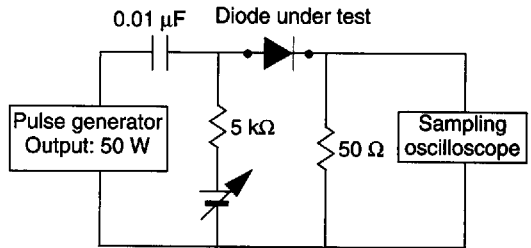


Figure 5



Test circuit for measuring reverse recovery time (t_{rr})

Figure 6